

[POWER] COMMANDER III

CERTIFIED **USB**

2002-2004 HONDA CBR 919 Hornet. Installation Instructions

Parts List

- 1 Power Commander
- 1 USB Cable
- 1 CD-ROM
- 1 Installation Guide
- 1 Power Adapter
- 2 Power Commander Decals
- 2 Dynojet Decals
- 1 Velcro® Strip
- 1 Alcohol Swab
- 2 Wire tap
- 1 Power lead

The ignition MUST be turned OFF before installation!

You can also download the Power Commander software and latest maps from our web site at:

www.powercommander.com

Button Adjustment Display



Faceplate Buttons

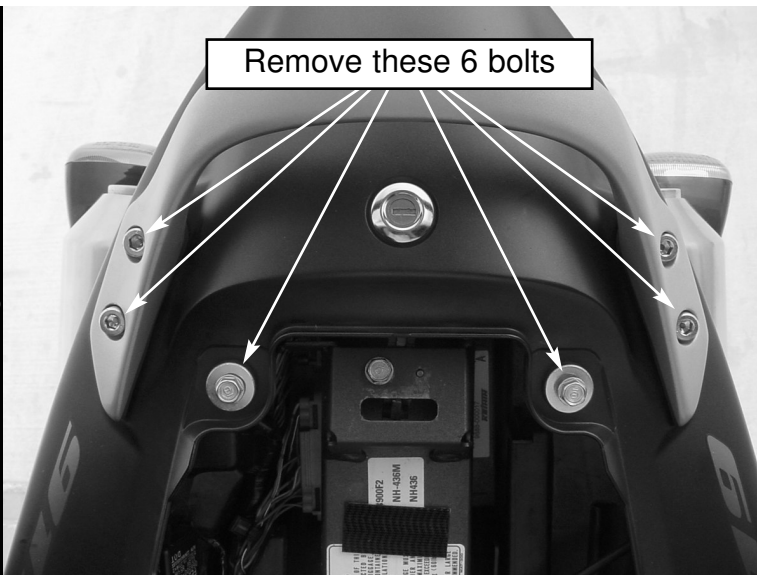
Expansion Port

USB Port



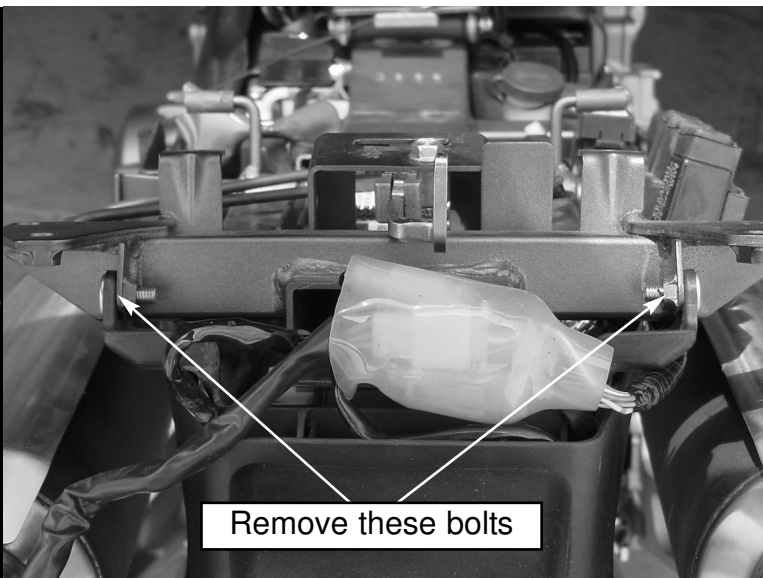
PLEASE READ ALL DIRECTIONS BEFORE STARTING INSTALLATION

Fig. A



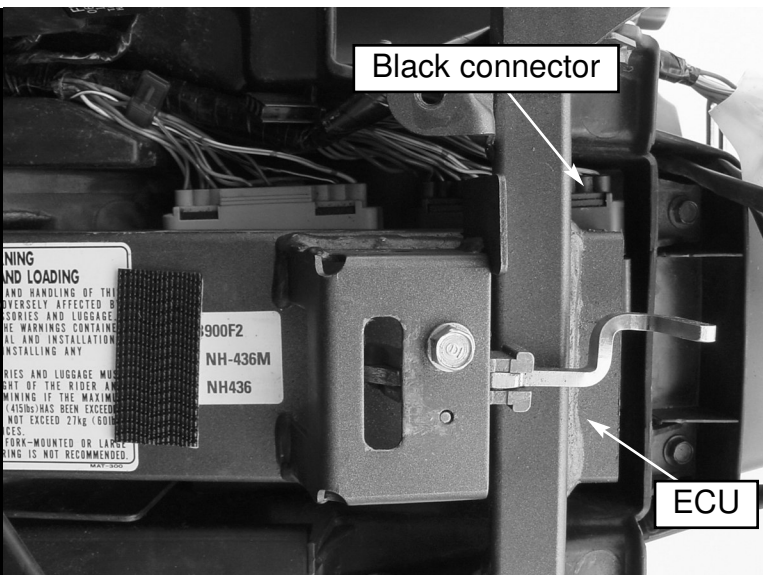
- 1 Remove the seat.
- 2 Remove the grab rail and tail section by removing the 6 bolts shown in Fig. A.
- 3 Remove the two pushpins in the front of the tail section. Squeeze the inside of the pushpin to remove.

Fig. B

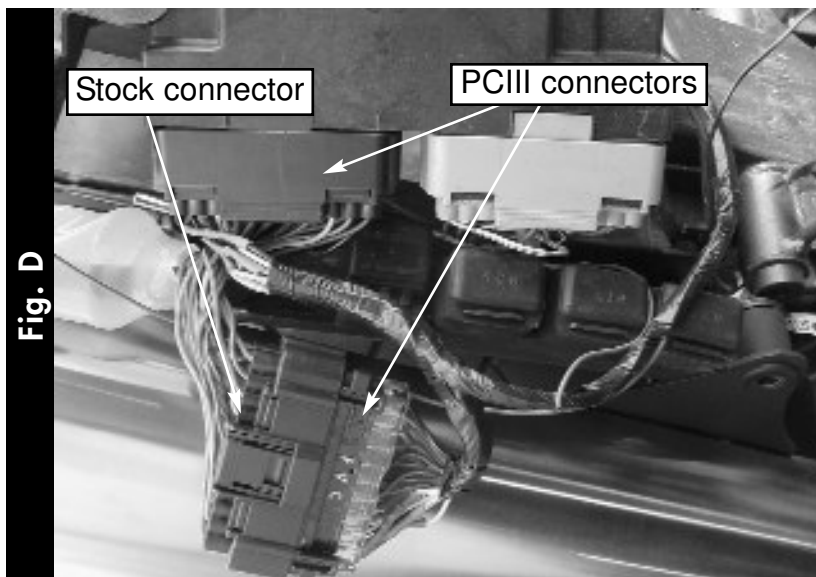


- 4 Remove the two bolts that hold the inner fender to the frame (Fig. B). There should now be ample room to slide the ECU out from under the frame.

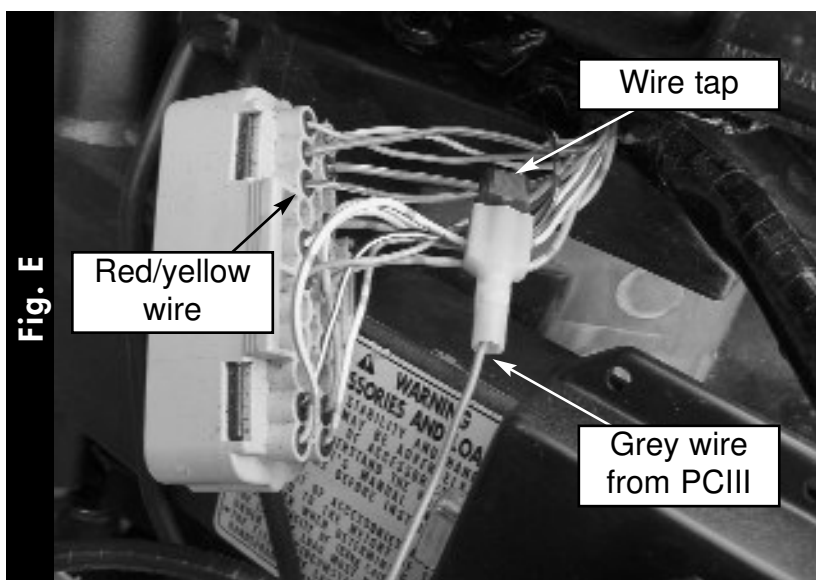
Fig. C



- 5 Unplug the black connector from the ECU (Fig. C).



- 6 Connect the PCIII in-line of the stock harness and ECU (Fig. D).

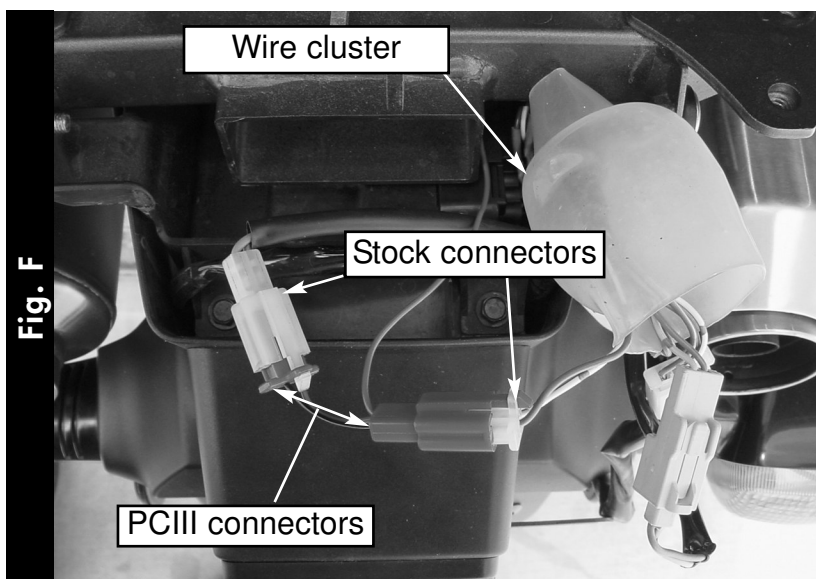


- 7 Locate the red wire with a yellow tracer on the grey connector of the ECU. Crimp the supplied wire tap to this wire (Fig. E).

Note: It is recommended to use dielectric grease on this connection.

- 8 Connect the grey wire from the PCIII to the wire tap (Fig. E).

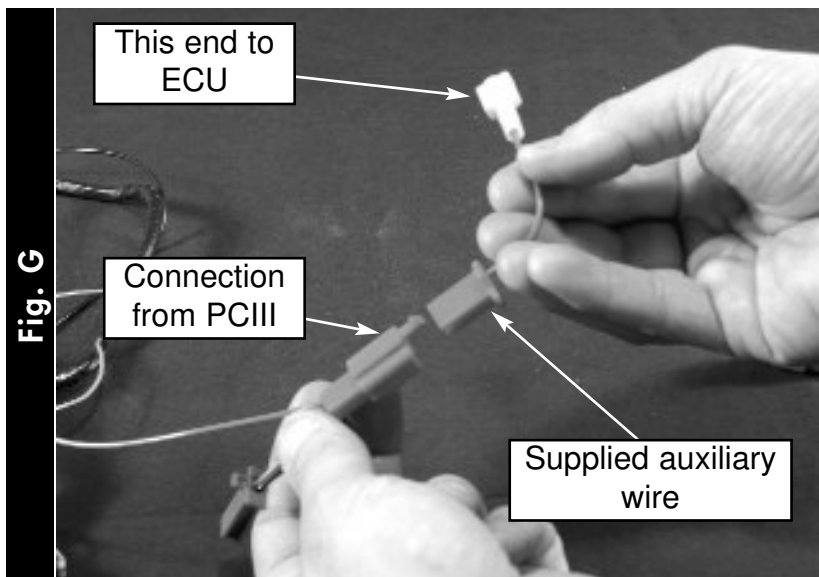
Note: It is recommended to use dielectric grease on this connection.



- 9 Locate the stock, 2 pin, opaque connector inside the wire cluster (Fig. F).

- 10 Unplug this connector and plug the red connectors from the PCIII in-line (Fig. F).

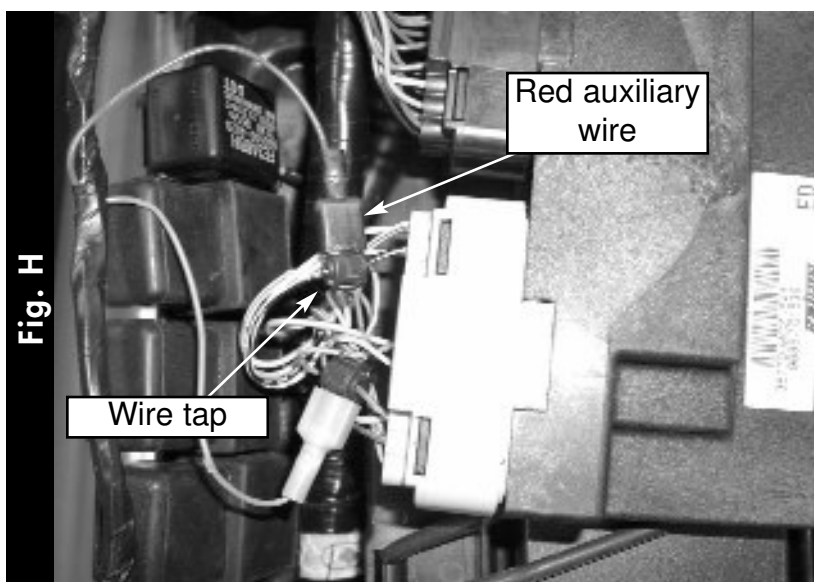
Note: If you have an European model skip steps 9-10 and follow steps 11-12.



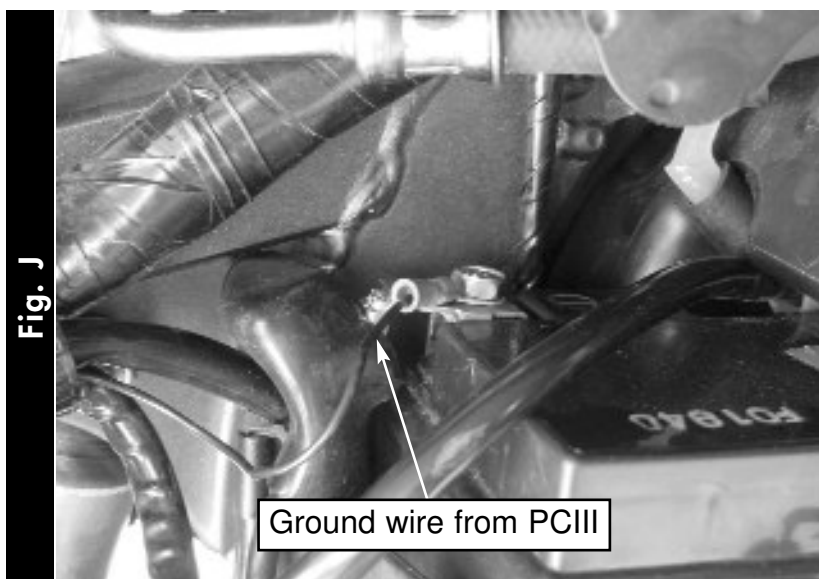
Note: *Follow steps 11-12 only if you have a European model.*

- 11 Plug the supplied auxiliary wire to the female end of the red connector on the PCIII. (Fig. G).

Note: *The other side of the red connector on the PCIII will NOT be plugged into anything.*

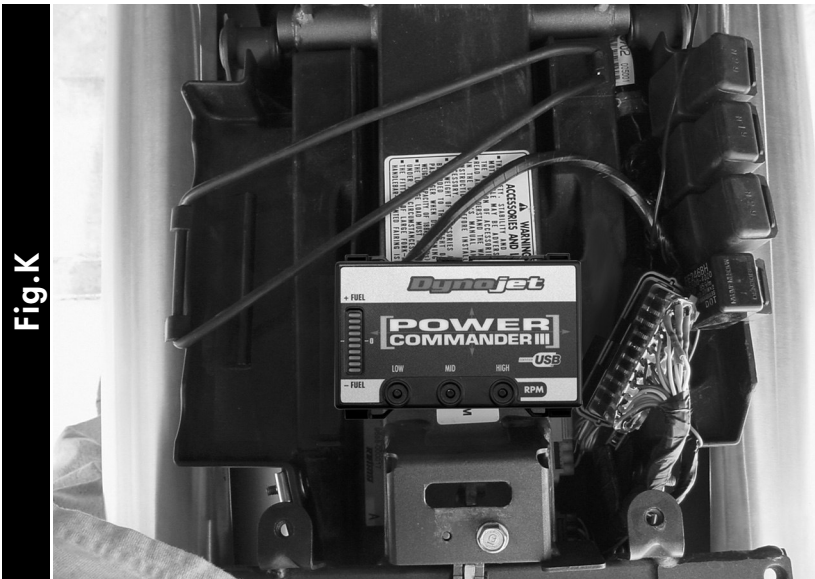


- 12 Crimp the supplied wire tap to the black wire with a white stripe off of the grey ECU connector. Connect the red auxiliary wire to the wire tap (Fig. H).



- 13 Route the ground wire from the PCIII to the negative side of the battery (Fig. J).
- 14 Slide the ECU back under the frame.

Fig.K



- 15 Using the supplied velcro install the PCIII onto the frame rail (Fig. J). Make sure to clean both surfaces with the alcohol swab before adhering the unit to the frame. You can check the placement of the unit by installing the seat for proper fit.
- 16 Make sure all wires are routed so they will not become pinched when the tail section and seat are reinstalled.
- 17 Install tail section and seat.