

PCV USER'S GUIDE.

There is more information and instructions available on the supplied CD.

Now that you have installed your Power Commander here is a brief overview on how to use the unit.

The Power Commander is shipped with a map for a completely stock bike unless it is special ordered with a different map. **If it is necessary to load a map for a different configuration you will need to perform the following steps:**

- First you will need to insert the supplied CD into your computer. The CD is designed to automatically start running upon inserting into the drive. It may take a few seconds for the setup menu to appear. (If it does not begin to run after 30 seconds go to the "My Computer" icon and double click it. Then double click the "CD drive" icon. Lastly, double click "powercommander.exe". This will manually start the CD)
- In order for the Power Commander to communicate with the computer the Power Commander Control Center Software must first be installed. Click on "install software" in the menu and follow the directions. (This will create a folder called C:Program Files / Power Commander 5 that the software and maps will be stored in).
- From the CD you will need to transfer the map database for your particular bike(s). Click on "map database". Find your model from the list and click on the model. (This will automatically install all the maps for that model to the C:/Program Files/Power Commander 5 folder.)

The latest software and maps can be found at www.powercommander.com

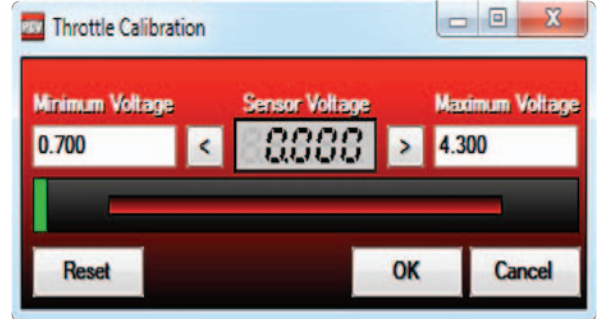
- The PCV maps are not the same as the PCIII maps. Load a map that has a .pvm file extension only.
- In order to send a map to the Power Commander you must first connect the USB cable to the computer and to the Power Commander unit. Make sure that the cable is fully seated into the Power Commander. There is a detent on the cable that could require light pressure to fully engage the cable. Open the Power Commander software by double clicking the PCV icon on your desktop. Click on OPEN MAP FILE and select the map you want to use from the database. Once the map is shown in the grid area click on SEND MAP.
- The values in the map represent a percentage of fuel change over stock. If you see a value of 10 in the map then at the throttle position and RPM range the bike will be 10% richer than stock. If the value was a -10 then it would be 10% leaner than stock. You have the ability to fine tune your fuel curve by altering these values. We recommend leaving this to one of our Tuning Centers as they have the ability to accurately read the air/fuel curve which allows them to optimize the fuel curve for every cell. Without having the ability to read the air/fuel ratio of the bike it is impossible to accurately make fine adjustments to your fuel curve.
- If you disconnect the battery or disconnect the Power Commander from the bike it will not lose the map. The only way to lose the map is to download another map to the unit.

THE POWER COMMANDER WILL COME CONFIGURED FOR THROTTLE POSITION, SPEED AND GEAR POSITION.

If you should need to recalibrate any of these parameters go to DEVICE TOOLS - CALIBRATE. The speed and gear position were setup with stock gearing and stock tires. Changing either of these variables can affect the accuracy of these readings. If you should need to recalibrate speed or gear it is necessary to get the bike either on a rear wheel stand or on a dynamometer.

TPS CALIBRATION

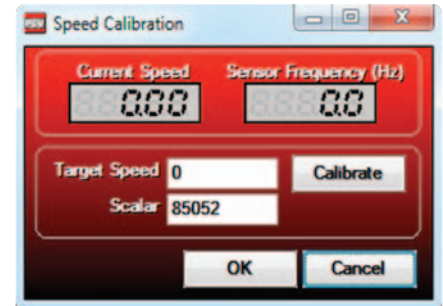
It is important that the PCV software TPS read 0% when the bike is fully warmed up and at idle. If it needs to be reset make sure the bike is fully warmed up before resetting. With the engine on, click on Reset, open throttle to the stop and close, then click OK. If your bike has fly-by-wire throttle only reset the throttle position on a dynamometer.



SPEED CALIBRATION

Type in your set target speed (recommended to be at least 30mph) Get the back wheel spinning to the set target speed and once the speed is steady click on Calibrate then click OK.

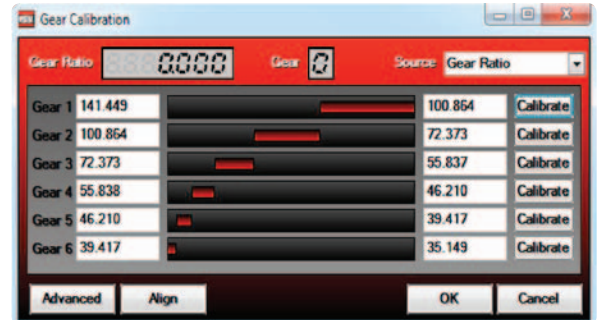
For the most accurate readings use a dynamometer to calibrate speed.



GEAR CALIBRATION

Once speed is calibrated you can then setup up gear position if needed. Get the bike on a stand or dynamometer and put the bike in first gear. Hold the throttle steady and click on calibrate for gear 1. Repeat this step for all gears.

If your bike is a 5 speed input values for 6th gear that are less than that of 5th gear. Click OK



CONFIGURE

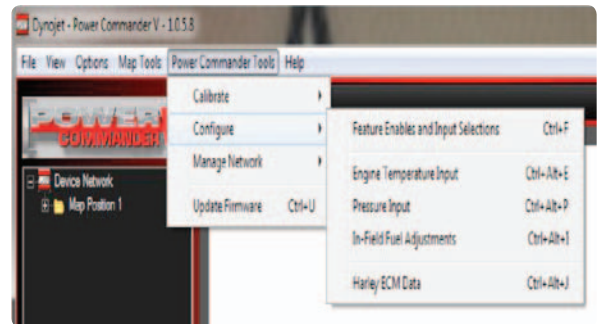
Features Enables and Input Selections - Gives access to the additional features (i.e. Map Switch, Quick Shifter, Accel Pump, Startup Fuel, Rev X-tend, and Auto Tune).

Engine temp - Displays engine temp either via the J1850 port or thru the 0-5v input

Pressure input - Offset base fuel map on 0-5v input

In-Field Fuel Adjustments - Make broad range adjustment without the need of a computer (only available with LCD-200 accessory).

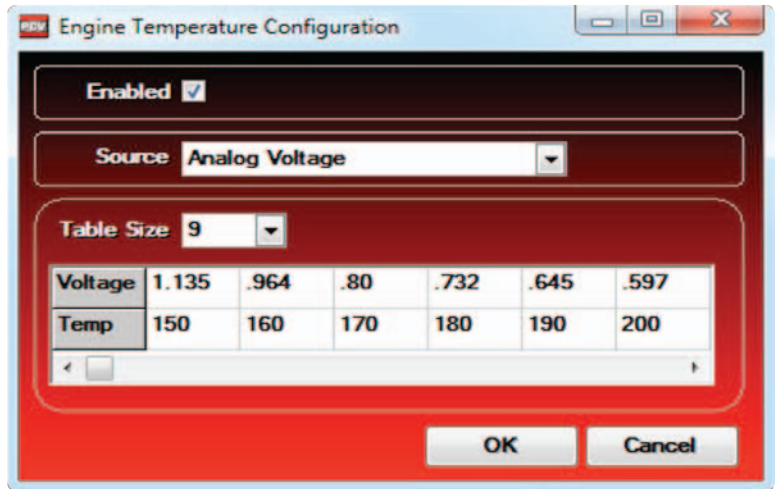
Harley ECM data - select J1850 data. Right click any gauge on the main screen to display Harley data.



ENGINE TEMPERATURE

On Harley models the engine temperature will be displayed via the J1850 data. Click enabled and the source of J1850.

For all other models the engine temperature can be configured thru the analog input. The more tables that are configured the more accurate your reading will be. Input the voltage read at the header pin of the analog input in relation to engine temperature

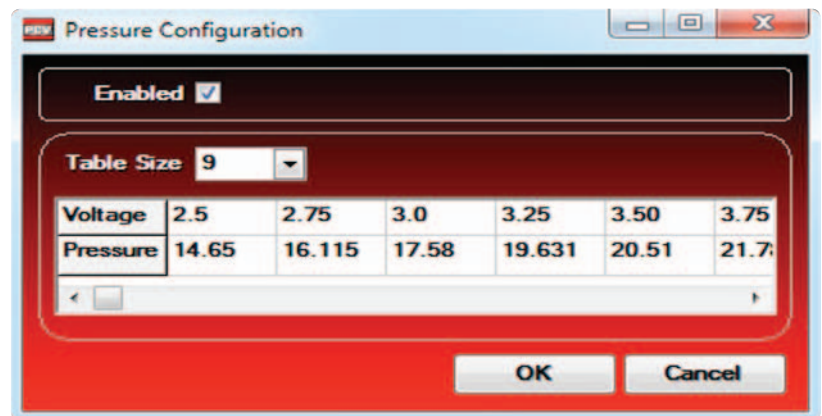


PRESSURE

You can offset your fuel curve based on this 0-5v analog input. This is intended to be used for boosted applications but can be based on any 0-5v signal.

Input the voltage readings of the sensor you are tapped into in relation to the reading you want displayed in the software.

On all models other than Harley if you are using the analog input to configure engine temperature do NOT enable the pressure.



QUICK SHIFTER

If using a quick shifter make sure the enabled box is checked.

If the gear setup has been configured the PCV has the ability to adjust the kill times per gear. Make the Mode Gear Dependent in the drop down menu.

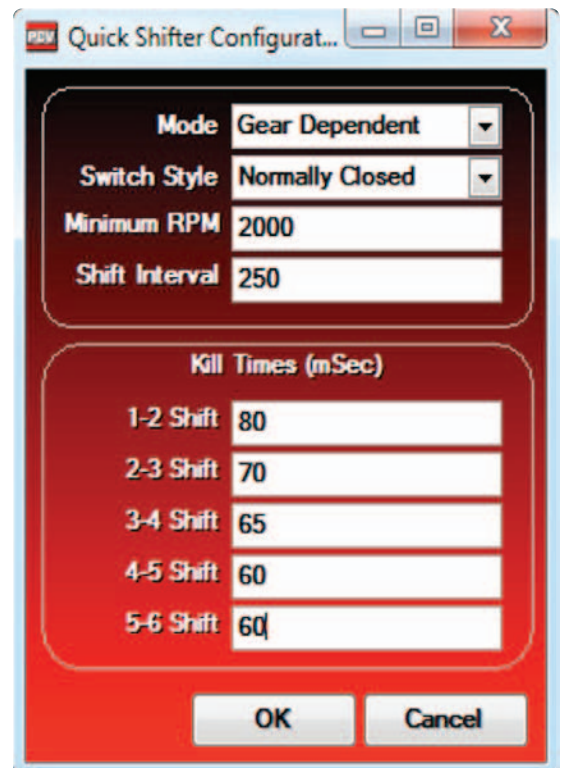
If gear is not setup the software will deliver the same kill time for all gears.

Switch Style - circuit style of the shift sensor being used. The older PC3 sensors are normally open circuit switches. the PC5 shift sensors and normally closed. (QEMs only work with normally closed circuit switches).

Minimum RPM - lowest RPM that the shifter can be activated

Shift Interval - period of time between shifts that the software will activate. This reading is in milliseconds.

Kill Time - how long to kill the engine on an upshift

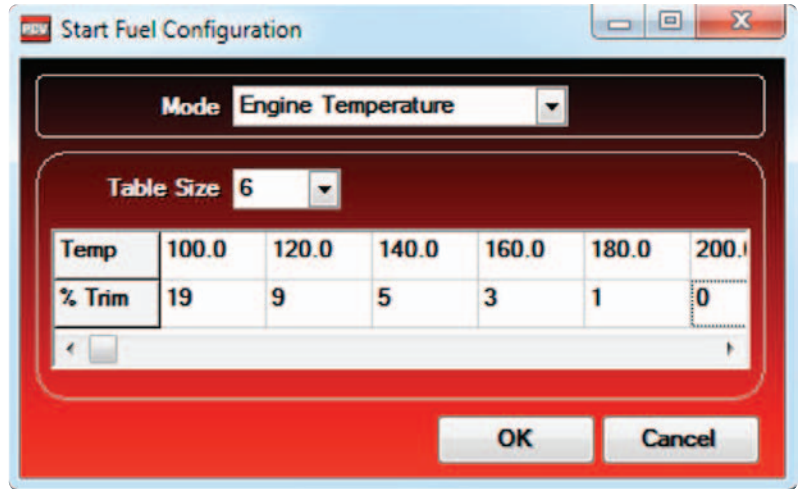


START UP FUEL

Start up fuel can be based on time or engine temperature. Choose what mode from the drop down menu.

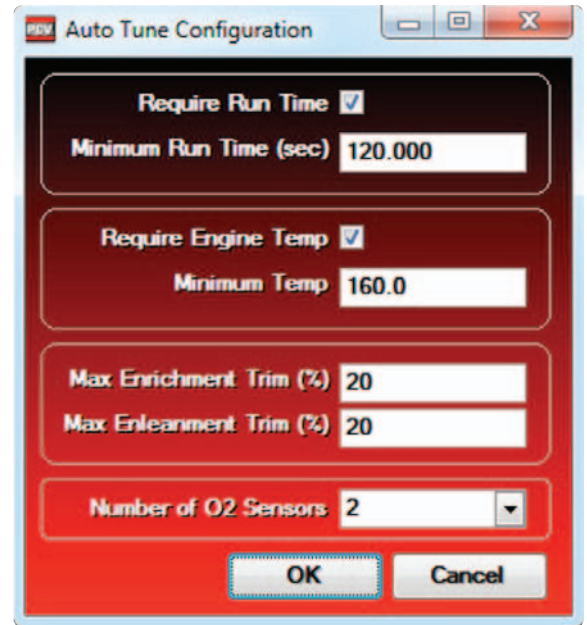
Time - from the first revolution of the crank the software will deliver a set percentage of fuel for a given amount of time in seconds

Engine temp - the software will deliver a percentage of fuel over the fuel map based on engine temperature. This can only be used if engine temperature has been configured.



AUTO TUNE

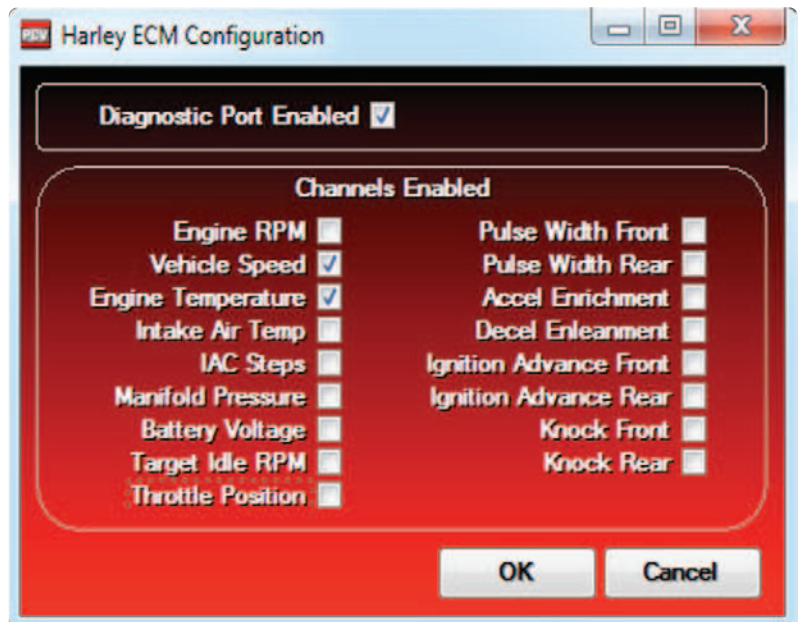
Each PCV from Dynojet comes configured for use with the Autotune kit. These configuration settings are explained in more detail with the instructions that come with the Autotune kit.



HARLEY ECM DATA

The J1850 data is streamed thru every PCV Harley Davidson model. This allows the software to display each channel listed.

The Speed and Engine Temperature channels are enabled as the unit is shipped from Dynojet. To enable other channels check the box next to the channel. These channels can be displayed on the main software screen by right clicking on any of the digital gauges.





DYNOJET POWER COMMANDER TUNING CENTERS
can optimise your fuel map or develop a custom fuel map for any specification on their Dynamometer. Approved Centers' have the latest Model 250 Dynamometer with real-time air/fuel module. They have also completed and passed a special training course at Dynojet.

ALASKA

House of H-D
Anchorage, AK 99517
907-248-5300

ALABAMA

CYCLE MOTION OF BIRMINGHAM
BIRMINGHAM, AL 35233
205-583-8601

Hands Performance Motorcycles
Jasper, AL 35501
205-221-3802

Mobile Bay H-D
Mobile, AL 36606
251-471-2174

Eastern Shore H-D
Daphne, AL 36526
251-626-8050

H & D Cycles
Lillian, AL 36549
251-961-2259

Cycle Tuning Services LLC
Millbrook, AL 36054
334-285-8464

Wood Performance
Cropwell, AL 35054
205-525-4949

Steve Johnson Racing
Irondale, AL 35210
205-956-4777

Xtreme Motorsports
Mobile, AL 36607
251-479-9888

Rods Performance
Hanceville, AL 35077
256-352-2643

Halls Motorsports
Mobile, AL 36695
251-666-7000

ARKANSAS

Rodneys Cycle House
Little Rock, AR 72209
501-562-6336

ARIZONA

Trask Performance
Phoenix, AZ 85027
623-879-8488

Eastside Performance Motorcycles
Mesa, AZ 85210
480-649-4440

Chosin Cycles LLC
Huachuca, AZ 85616
520-456-8859

BMW of Scottsdale
Scottsdale, AZ 85260
408-609-1800

Chesters H-D
Mesa, AZ 85210
480-894-0404

Average Joes Motorcycle Service
Mesa, AZ 85201
480-668-6363

Desert Custom Cycles
Mesa, AZ 85201
480-835-6666

1 Cycles & Machines
Surprise, AZ 85387
623-930-1337

Grand Canyon H-D
Bellemont, AZ 86015
928-774-3896

ECS Dyno
Mesa, AZ 85204
480-593-4269

Thunder Manufacturing
Phoenix, AZ 85085
623-869-7154

Eastside Performance Inc
Mesa, AZ 85210
480-649-4440

KMS Performance
Phoenix, AZ 85009
602-442-4340

Pro-ATV
Phoenix, AZ 85027
623-581-7353

CALIFORNIA

831 Cycles
Seaside, CA 93955
831-648-3000

Laidlaws H-D
Baldwin Park, CA 91706
626-851-0412

H-D of Sacramento
Sacramento, CA 95815
916-929-4680

Lees Cycles
San Diego, CA 96003
858-541-0334

Spears Racing
Campbell, CA 95008
408-879-0724

San Jose H-D
San Jose, CA 95128
408-998-1464

MCE Racing
Willows, CA 95988
530-934-3237

L&L Motorsports
Little Rock, CA 93543
661-944-9043

Renegade Classics
Cathedral City, CA 92234
760-324-4909

Horn Cycle Works
Pomona, CA 91767
909-392-8788

Mission Motorsports
Irvine, CA 92618
949-582-0351

Stokers
Merced, CA 95340
209-722-8811

R.A.M. Products / RAM Cycles
San Jose, CA 95112
408-298-6800

EMF Motorsports
Morgan Hill, CA 95037
408-776-7526

Horsepower Express
Campbell, CA 95008
408-866-1683

C & E Auburn V-Twin
Auburn, CA 95602
530-885-7161

Holden McIntosh Motorcycle Service
Visalia, CA 93291
559-732-3112

R Neal Racing
El Monte, CA 91732
626-303-6454

Bay Area Performance
Mountain View, CA 94043
650-969-0372

Antelope Valley H-D
Lancaster, CA 93534
661-948-5959

Life Style Cycles
Anaheim, CA 92806
714-490-0155

H-D of Fullerton
Fullerton, CA 92833
714-871-6563

John Jessups Dream Rides
Stockton, CA 95204
800-769-6697

Heavy Duty Cycles
Lompoc, CA 93436
805-735-8797

Motorcycle Machine
Santa Maria, CA 93454
805-922-6959

Temecula Motorcycle Service
Temecula, CA 92590
951-296-9377

California Rider
Redlands, CA 92373
909-798-7798

Herrera Racing
Montebello, CA 90640
323-517-4518

Nichols Sportbike Service
Milpitas, CA 95035
408-945-8127

G Force Performance
Santa Clara, CA 95051
408-244-8090

Nor-Cal Cycles
Millbrae, CA 94030
650-872-2354

North County Hyper Sports
Oceanside, CA 92054
760-722-8863

Kyle Racing Engines
Sand City, CA 93955
831-394-1330

Cycle Imports
Soquel, CA 95073
831-479-3667

Monterey Peninsula Powersports
Seaside, CA 93955
831-899-7433

Lees Cycle Service
San Diego, CA 92123
858-541-2080

Mach 1 Motorcycles
Costa Mesa, CA 92627
949-642-3084

Southcoast Ducati
Irvine, CA 92618
949-951-1097

Big Boy Performance
Modesto, CA 95351
209-544-2477

R & R Customs
San Andreas, CA 95249
209-754-5432

Spears Racing
Manteca, CA 95336
209-923-4684

West Coast GP Cycles
Los Angeles, CA 90064
310-477-0997

Fastlane Cycles
Fremont, CA 94538
510-445-1080

Godspeed
Oakland, CA 94608
510-547-1313

Chinos Motorcycles
Fremont, CA 94538
510-651-0873

Apex Mototech
Chico, CA 95926
530-343-2739

Dynges Dyno
Visalia, CA 93292
559-977-2258

Cycle Visions
San Diego, CA 92110
619-295-7800

JLK Precision MC
San Bruno, CA 94066
650-952-1129

Tuned Industries
Bakersfield, CA 93312
661-578-0854

MGS Custom Bikes Inc
Lancaster, CA 93535
661-951-9878

Orange County Motorsports
Santa Ana, CA 92705
714-429-9200

R Cal Racing
Huntington Beach, CA 92647
714-848-6797

Mickey Cohen Motorsports
Placentia, CA 92870
714-993-5000

Jett Tuning
Camarillo, CA 93012
805-482-4192

Full Throttle Performance
Gold River, CA 95670
916-851-0842

Brentwood V-Twin
Antioch, CA 94509
925-755-2453

Mission Motorsports
Irvine, CA 92618
949-582-0351

Mammoth Motorsports
Rohnert Park, CA 94928
707-585-7677

Powersport Services
Corona, CA 92880
951-858-7053

Mitchells Modesto H-D
Modesto, CA 95351
209-522-1069

Two Wheel Performance
Modesto, CA 95351
209-527-4431

Two Brothers Racing
Santa Ana, CA 92705
714-550-6070

COLORADO

Phat Rides Custom Cycles
Loveland, CO 80537
970-663-4155

BLACK WIDOW CAMS
LITTLETON, CO 80125
303-814-1709

Redhill Motorcycle Werx
Lyons, CO 80540
303-823-6363

Pikes Peak H-D
Colorado Springs, CO 80918
719-278-2300

Durango H-D
Durango, CO 81301
970-259-0778

Sangers Cycles Inc
Fort Collins, CO 80524
970-419-5500

Fay Myers Motorcycle World
Greenwood Village, CO 80112
303-744-6632

Personalized Motorcycle Services
Avon, CO 81620
970-949-6561

Boulder Motor Sports
Boulder, CO 80303
303-495-3416

Erico Motorsports
Denver, CO 80205
303-308-1811

Faster Motorsports
Denver, CO 80204
303-825-0975

Roadies Performance Inc
Arvada, CO 80002
303-420-8782

Moto Garage LLC
Longmont, CO 80504
303-485-1858

Harmonius Dyno Center
Penrose, CO 81240
719-784-3860

MotoAdventure Kawasaki
Loveland, CO 80538
970-669-5377

CONNECTICUT

Diggers Harley Service
Northford, CT 06472
203-484-4345

Dyno Solutions
Brookfield, CT 06804
203-775-7982

Fritzs H-D
Stamford, CT 06902
203-975-1985

Bridgeport H-D
Bridgeport, CT 06615
203-380-2600

Fritz's H-D
Stamford, CT 06902
203-975-1985

Jim's Machine Shop Inc.
Putnam, CT 06260
860-928-5151

Digger's Harley Services
Northford, CT 06472
203-484-4345

Dyno Solutions
Brookfield, CT 06804
203-775-7982

DELAWARE

Freedom Cycle
Wilmington, DE 19809
302-798-6900

L&D Suzuki Inc
Dover, DE 19901
302-674-5410

Custom Cycle and Machine
New Castle, DE 19720
302-328-7200

FLORIDA

Kens Mobile Dyno & Cycle Service
Lakeland, FL 33810
863-370-3157

Space Coast H-D
Palm Bay, FL 32905
321-259-1311

InstaGator Choppers
Longwood, FL 32750
407-966-4661

Insta-gator Choppers
Longwood, FL 32750
407-966-4661

King Performance
Merritt Island, FL 32953
214-530-0983

Seminole H-D & Buell
Sanford, FL 32771
800-666-6900

Cycle Dynamics Inc
Boynton Beach, FL 33426
561-369-7614

Bens Motorcycle Repairs
Milton, FL 32571
850-994-1200

Horneys Custom Cycles
Fort Myers, FL 33966
239-278-0484

Carls Speed Shop
Daytona Beach, FL 32114
386-258-3000

H-D of Pensacola
Pensacola, FL 32505
850-494-1224

Rossiters H-D
Sarasota, FL 34232
941-951-6103

Blais Cycle
Miami, FL 33179
305-654-8114

Jam Tek Performance
Miami, FL 33186
305-763-7929

Barracuda Motor Sports
Fort Walton Beach, FL 32548
850-244-3394

Turn One Performance
Milton, FL 32570
850-626-0539

Beach Boulevard Motorsports
Jacksonville, FL 32246
888-287-1781

Precision Cycle
Sarasota, FL 34236
941-955-1355

Seminole Powersports
Sanford, FL 32771
407-322-3253

Motorcycle Clinic
Kissimmee, FL 34744
407-846-7508

Cyclorama
N Pinellas Park, FL 33781
727-546-0889

Bucks Down Racing
Tampa, FL 34677
813-818-0508

Dynoworks Inc
Sarasota, FL 34237
941-366-2929

Classic Cycles Suzuki of Sarasota
Sarasota, FL 34233
941-925-0376

Cycle Pro
Orlando, FL 32822
407-277-5557

AMR Superbikes Inc.
Boca Raton, FL 33431
561-750-6069

Coast Performance
Saint Augustine, FL 32086
904-687-8397

GEORGIA

Polaris Suzuki of Statesboro
Statesboro, GA 30461
912-764-2547

PATRICKS CUSTOM CYCLE EXCHANG
Augusta, GA 30906
706-798-0068

Freewheeling
Douglasville, GA 30134
770-920-1033

BBC Racing DBA Marietta Motorsports
Marietta, GA 30060
770-425-5252

Renegade Classics Of Savannah
Richmond Hill, GA 31324
912-756-6841

H-D of Atlanta
Lithia Springs, GA 30122
770-944-1340

Hog Wild of Temple
Temple, GA 30179
770-562-0040

Livengood Motorsports Inc
Lawrenceville, GA 30046
678-442-0072

Ducshop
Marietta, GA 30062
678-594-7717

BPA Mobile Dyno
Calhoun, GA 30701
706-629-9776

Revolution Manufacturing
Marietta, GA 30066
770-420-9191

HAWAII

Rev Tek LLC
Waipahu, HI 96797
808-678-1112

Cycle Sports Iwilei
Honolulu, HI 96817
808-536-7023

IOWA

Fenders Cycle & Motorsport
Des Moines, IA 50315
515-256-9062

Cycle Tech
Ames, IA 50010
515-233-0001

Zylstra H-D
Ames, IA 50010
515-232-6223

Metro H-D/Suzuki
Cedar Rapids, IA 52404
319-362-9496

Radical Cycle
Des Moines, IA 50313
515-243-8723

C & C Custom Cycle
Chariton, IA 50049
641-774-7494

R/J Performance
Ottumwa, IA 52501
641-684-8400

Twisted Grip Cycle
Council Bluffs, IA 51501
712-256-7323

IDAHO

High Desert H-D
Meridian, ID 83642
208-338-5599

Pro Power Performance
Boise, ID 83706
208-685-0185

ILLINOIS

Performance Cycle & Dyno Inc.
Harvard, IL 60033
815-648-4440

Bikers PHD LLC
Creve Coeur, IL 61610
309-694-9002

TNT Action Sports Unlimited
Quincy, IL 62305
217-224-1004

Rat's Whole Place
Decatur, IL 62526
217-875-7223

Coziahr H-D
Forsyth, IL 62535
217-877-7115

Highlander Customs
Crystal Lake, IL 60012
815-788-8388

Warren's Inc
Round Lake, IL 60073
847-546-8613

Steve's Bike Shop
Ursa, IL 62376
217-964-2412

Frieze H-D
O'Fallon, IL 62269
618-277-8864

Woodstock H-D
Woodstock, IL 60098
815-337-3511

Boondock Customs
Crystal Lake, IL 60012
815-788-8838

T&N Cycle
Alton, IL 62002
618-530-1129

Moto Fanatic
Morris, IL 60450
630-551-5155

Safety First Racing LLC
Addison, IL 60101
847-357-1309

Illinois Dyno Center
Port Byron, IL 61275
309-523-9200

MD Racing
Orion, IL 61273
309-526-3246

Valley Racing
Beecher, IL 60401
708-946-1440

Cycle Tech Motorcycle Care Center
Loves Park, IL 61111
815-877-0614

Lake Shore H-D/Buell
Libertyville, IL 60048
847-662-4500

TNT Action Sports
Quincy, IL 62301
217-224-1004

INDIANA

Mud Motorsports
Martinsville, IN 46151
765-349-8938

H-D Buell of Bloomington
Bloomington, IN 47404
812-333-8300

Southside Johnny's
Lake Village, IN 46349
219-384-8568

Calumet H-D & Buell
Munster, IN 46321
219-934-6366

Jim Baileys H-D/Buell
Fort Wayne, IN 46804
260-489-2464

Indy V-Twin
Indianapolis, IN 46227
317-781-7968

Victory Drive V-Twin
Indianapolis, IN 46203
317-786-9302

Southside H-D
Indianapolis, IN 46237
317-885-5180

Hoosier H-D
Elkhart, IN 46514
574-262-2735

Furious Cycle
Fort Wayne, IN 46803
260-749-9196

Schnitz Racing
Decatur, IN 46733
260-724-0438

Flat Out Motorcycles
Indianapolis, IN 46219
317-890-9110

Cycle Solutions Inc
Hartford City, IN 47348
765-768-6000

Kopp Cycles Inc
Batesville, IN 47006
812-933-5377

Richmond Powersports
Richmond, IN 47374
765-939-8344

XS Performance
Kokomo, IN 46902
765-860-9792

KANSAS

Alef's H-D
Wichita, KS 67219
316-721-3500

M & M Choppers Inc
Galva, KS 67443
620-654-3142

Smither's Customs
Olathe, KS 66061
913-768-8667

Topeka H-D
Topeka, KS 66612
785-234-6174

Doerflers H-D
Hays, KS 67601
785-625-2022

Olathe Suzuki
Olathe, KS 66061
913-782-8787

KENTUCKY

H-D of Pikeville
Pikeville, KY 41501
606-433-0911

Bells Suzuki
Lexington, KY 40505
859-299-3521

LOUISIANA

D & L Powersports
Harvey, LA 70058
504-227-2272

Slydog Cycles
Baton Rouge, LA 70819
225-272-6313

Mike Cat's Cycle Works
Kenner, LA 70062
504-469-6453

Honda of Lafayette
Lafayette, LA 70507
337-234-6632

The Bike Shop By George
Lafayette, LA 70506
337-504-3371

Cashio Cycles
Belle Chasse, LA 70037
504-393-2260

Raganit Dyno Tune Center
Houma, LA 70364
985-879-1338

MASSACHUSETTS

Raw Motorsport
Swansea, MA 02777
508-678-9865

J&D Cycles
Hyde Park, MA 2136
617-364-4666

All Sport Cycle Service
Orange, MA 01364
978-544-6535

Rahns Engineering
Abington, MA 2351
781-878-3683

Rob's Dyno Service
Gardner, MA 1440
978-895-0441

Adrenaline Cycle
Swenson, MA 02777
508-379-0100

MARYLAND

H-D of Washington
Fort Washington, MD 20744
301-248-1200

Eastern Cycle Performance
Gambriells, MD 21054
410-451-4542

Criswell Powersports
Germantown, MD 20874
301-212-4535

High Performance Cycles
Capitol Heights, MD 20743
301-333-3600

Powerhouse Cycle Inc
Owings, MD 20736
410-257-0045

MRP Motorsports
Pasadena, MD 21122
410-544-5113

American Cycle Performance
Glen Burnie, MD 21061
410-787-7300

Cycle Shack
Randallstown, MD 21133
410-922-6141

MAINE

Big Moose H-D
Portland, ME 4103
207-797-6061

Custom Hawg
Scarborough, ME 4074
207-883-7967

Moto Milano
Windham, ME 4062
207-892-5420

MICHIGAN

Capitol H-D
Dimondale, MI 48821
517-646-2345

Wolverine H-D
Clinton Township, MI 48036
586-463-7700

American Iron
Jenison, MI 49428
616-457-2276

Grand Rapids H-D
Hudsonville, MI 49426
616-896-0111

E.B. Cycle
Monroe, MI 48161
734-242-6080

SicHP Performance Engineering
Romulus, MI 48147
734-229-0400

Vehicle City H-D
Flint, MI 48507
810-234-6646

Gilbert's H-D
Port Huron, MI 48060
810-982-4351

Battle Creek H-D
Battle Creek, MI 49015
269-979-2233

Stevensons Cycle
Wayne, MI 48184
734-641-2200

Syndicate Cycle
Essexville, MI 48732
989-894-7912

D & B Cycle Parts & Accessories Inc
Warren, MI 48088
586-447-1234

SicHP Performance Engineering
Romulus, MI 48174
734-229-0400

Ray Cs Cycle & Sports
Lapeer, MI 48446
810-664-9261

Rosenau Powersports
Dearborn Heights, MI 48127
313-278-5000

MINNESOTA

Grant County Choppers
Herman, MN 56248
320-677-3330

Straightline Performance

Forest Lake, MN 55025
651-466-0212

World Class Tuning

Watertown, MN 55388
952-955-5119

Zylstra H-D

Elk River, MN 55330
763-241-2000

52/52 Performance Tuning

Elk River, MN 55330
763-269-1976

St Boni Motorsports

St Bonifacius, MN 55375
952-446-1554

D&M Custom Cycle

New Ulm, MN 56073
507-359-1971

Manley Cycle

Springvalley, MN 54767
612-822-7377

MC Dyno Tech

Hugo, MN 55038
651-762-8031

Hi-Per Sports Inc

Maple Grove, MN 55369
763-493-5620

Crow River H-D

Delano, MN 55232
763-972-6282

MISSOURI**Hogs Breath Cycles LLC**

Houston, MO 65483
417-967-0660

Cycle Connection H-D

Joplin, MO 64804
417-623-1054

Gails H-D

Grandview, MO 64030
800-776-1212

Blue Springs H-D

Blue Springs, MO 64015
816-227-5005

Cycle Connection H-D

Joplin, MO 64804
877-545-8964

Widman Motorcycle Sales

St Louis, MO 63118
800-404-6880

MISSISSIPPI**Gary Williams & Co./Air Tech Cycle**

Pearl, MS 39208
601-939-5861

Hunter Works

Collinsville, MS 39325
601-771-0070

Precision V Twins Inc

Nesbit, MS 38651
662-429-0399

Suzuki City Inc

Biloxi, MS 39531
228-594-8870

Oasis Cycles Inc.

Brandon, MS 39042
601-824-4893

MONTANA**Montana H-D, Buell Ducati**

Missoula, MT 59808
406-721-2154

Yellowstone H-D

Belgrade, MT 59714
406-388-7684

Bike Shack

Bozeman, MT 59715
406-556-4644

NORTH CAROLINA**Precision Cycles**

Wilmington, NC 28405
910-797-6111

The Bike Doctor Inc.

Newport, NC 28570
252-726-7482

Two Wheel Accessories Inc

Rocky Mount, NC 27804
252-977-9000

Turbo Tune U.S Ltd

Greensboro, NC 27403
336-378-1252

Yamaha Kawasaki of Florence

Florence, NC 29505
843-655-8486

Rocky Mount H-D

Rocky Mount, NC 27804
252-446-7292

Bikers Blvd

Raleigh, NC 27612
919-786-0033

Hawaya Racing

Millers Creek, NC 28651
336-973-5078

Carolina H-D

Gastonia, NC 28054
704-867-2855

Tilleys H-D

Statesville, NC 28677
704-872-3883

Cape Fear H-D

Fayetteville, NC 28303
910-864-1200

Nelsons Dyno Tuning Center

Raeford, NC 28376
910-875-7701

Ray Price H-D

Raleigh, NC 27603
919-832-2261

Dougs Custom Cycle

Mebane, NC 27302
919-563-6738

Ron Ayers Motorsports

Greenville, NC 27834
252-758-3084

Lees Performance Cycles

Charlotte, NC 28269
704-599-1507

T-Man Performance

Kernersville, NC 27284
336-993-7068

Dal Kawa Cycle Center

Hendersonville, NC 28739
828-692-7519

RCs Performance

Laurinburg, NC 28352
910-276-4942

Max Power Mobile Dyno

Concord, NC 28027
704-756-8972

NORTH DAKOTA**Stutsman H-D**

Jamestown, ND 58401
701-252-5271

Rough Rider H-D

Minot, ND 58701
701-839-6330

Solid Performance

Fargo, ND 58104
701-356-4171

The Speed Shop Inc.

Grand Forks, ND 58203
701-772-0256

NEBRASKA**Clifford Cycle**

Omaha, NE 68104
402-558-8006

Werner Cycle Works

Omaha, NE 68138
402-894-3050

H-D Central

Grand Island, NE 68801
308-382-7020

Dillon Brothers H-D

Omaha, NE 68116
402-289-5556

NEW HAMPSHIRE**Seacoast Sport Cycle**

Derry, NH 03038
603-437-5656

Naults Honda Powerhouse

Manchester, NH 3102
603-669-7220

R & R Cycle

Manchester, NH 03103
603-635-1488

RJ'S Motorsports/RPM Motorcycle Service

Nashua, NH 03063
603-595-8534

NEW JERSEY**Custom & Performance Cycle Center**

Blackwood, NJ 08012
609-351-7907

Black Hills Custom Parts

Rockaway, NJ 07866
973-983-0200

JDS Cycle Parts

Roselle Park, NJ 07204
908-245-2445

Sussex Hills Ltd

Sussex, NJ 07461
973-875-2048

NEW MEXICO**Thunderbird H-D**

Albuquerque, NM 87113
505-856-1600

New Life Builders

Belen, NM 87002
505-861-1565

NEVADA**Fastline Performance**

Las Vegas, NV 89118
702-776-7223

Sinister Cycle

Las Vegas, NV 89081
702-639-8657

Big Valley Motorsports

Reno, NV 89502
775-322-4311

High Performance Custom Cycles LLC

Reno, NV 89502
775-828-0404

Las Vegas Dyno-Tech LLC

Las Vegas, NV 89115
702-644-9412

Street Rider of Reno

Reno, NV 89502
775-337-2055

Freedom Cycle

Reno, NV 89511
775-358-3500

Superbike Performance Laboratories

Reno, NV 89502
775-825-4457

Street to Sand Off-Road

Reno, NV 89502
775-327-4400

Dynojet Research

North Las Vegas, NV 89081
800-992-4993

NEW YORK**Iron Block H-D Inc**

Adams Center, NY 13606
315-583-6177

Brunswick H-D Buell

Troy, NY 12180
518-279-1145

Cycle Stop Inc

Rochester, NY 14620
585-424-2120

Orient Express Racing

Brentwood, NY 11717
631-231-9552

HTG Motorsports

Grand Island, NY 14072
716-573-6131

Spitzies Motorcycle Center

Albany, NY 12205
518-456-7433

McDermotts H-D

Fort Ann, NY 12827
518-746-9303

Go Slo Inc

Fort Ann, NY 12827
518-798-4205

Rosas Cycle

Huntington, NY 11746
631-424-4955

Buffalo H-D

Amherst, NY 14226
716-832-7159

Woodstock H-D

Kingston, NY 12401
845-338-2800

Joe's Cycle Repair

Mechanicville, NY 12118
518-664-7254

Matts Cycle Center

Coxsackie, NY 12051
518-731-8118

King Cycles

Brooklyn, NY 11203
718-773-2279

Performance H-D

Syracuse, NY 13204
315-471-1157

North Shore Motorcycles

New Hyde Park, NY 11040
516-352-5555

J Js Cycle

Watervliet, NY 12189
518-266-9657

Golden Motors

Cairo, NY 12413
518-622-3317

Powerhouse Motorcycles

West Babylon, NY 11704
631-491-6767

Maximum Motorsports

Riverhead, NY 11901
631-727-5988

Action Cycle Performance Center

Spring Valley, NY 10977
845-356-1505

Westchester Powersports Inc.

Bedford Hills, NY 10507
914-864-0656

OHIO**Adventure H-D**

Dover, OH 44622
800-828-2875

Honda East Yamaha Suzuki

Maumee, OH 43537
419-891-1230

Honda, Harley, Suzuki of Chillicothe

Chillicothe, OH 45601
740-773-8826

Mid Ohio H-D

Springfield, OH 45505
937-322-3590

Gover H-D/Buell

Piqua, OH 45356
937-773-8733

H-D Sales & Service

Napoleon, OH 43545
419-592-7123

Brock's Performance Products

Beavercreek, OH 45430
937-912-0054

Maximum Performance & Handling

Peninsula, OH 44264
330-922-8000

MSP Racing

Hebron, OH 43056
740-928-3966

Canton Cycles

Canton, OH 44702
330-456-1555

Mickeys Rolling Thunder

Newton Falls, OH 44444
330-872-0013

Western Reserve H-D

Mentor, OH 44060
440-974-6900

JYC Customs LLC

Harrison, OH 45030
513-353-9957

Maximum Performance & Handling

Hudson, OH 44236
330-655-5015

Dyno Power

Toledo, OH 43612
419-478-7940

Crooked River Choppers Inc

Litchfield, OH 44253
330-723-8000

OKLAHOMA**Route 66 Custom Cycles**

Miami, OK 74354
918-542-5090

RPM Performance Cycles

Edmond, OK 73003
405-761-2217

OKC Thunder Cycles

Oklahoma City, OK 73114
405-751-3706

K&N Motorcycles

Tulsa, OK 74131
918-446-6657

M & M Cycles LLC

Tahlequah, OK 74464
918-456-6460

The Kinetic Playground

Tulsa, OK 74105
888-321-6990

OREGON**RPM Performance**

Clackamas, OR 97015
503-650-9401

Phantom Cycles

Pendleton, OR 97801
541-278-1644

Latus Motors H-D

Gladstone, OR 97027
503-249-8653

Freeman Choppers

Sheridan, OR 97378
503-434-1718

Salem H-D

Salem, OR 97305
508-363-0634

Jerrys Cycle Repair

Bend, OR 97701
541-318-3444

Greg Coen Motor Company

Springfield, OR 97447
541-474-3525

D & S H-D

Medford, OR 97501
541-535-5515

Mid-Valley Cycles

Hubbard, OR 97032
503-981-1344

Cascade Moto Classics Inc.

Beaverton, OR 97005
503-574-3353

Hansens BMW Ducati Triumph KTM

Medford, OR 97501
541-535-3342

PENNSYLVANIA**Throttle City**

Levittown, PA 19057
215-945-0232

Blocker Enterprises Inc

Parryville, PA 18244
610-377-0440

Horsepower Inc

Erie, PA 16505
814-836-5782

Electric City H-D

Scranton, PA 18505
800-464-0057

National Road H-D

Uniontown, PA 15401
724-439-8888

Feltes Motorcycles Inc

Jeannette, PA 15644
724-853-5000

American Cycle Fabrication

Bloomsburg, PA 17815
570-752-8715

Custom Plus Cycles

Avonmore, PA 15618
724-727-2911

West Hills Motorsports

Moon Township, PA 15108
412-262-2200

Sports Cycle Suzuki

Leesport, PA 19533
610-916-5000

Fast by Ferracci

Willow Grove, PA 19091
215-657-1276

Karns Performance

Camp Hill, PA 17011
717-920-5225

Stump's Garage

Pine Grove, PA 17963
570-345-4060

PUERTO RICO**Top Fuel Tech**

Guaynabo, PR 969
787-731-4898

Moto Tech Service

Moca, PR 676
787-818-4406

SOUTH CAROLINA**Flashes Speed & Custom**

Orangeburg, SC 29115
803-682-3286

Big Boys Motorcycles LLC

West Cola, SC 29169
803-794-7900

T L Cycles

Ninety Six, SC 29666
864-543-3144

RS Cycle

Murrells Inlet, SC 29576
843-357-2806

76 Cycle Shop

Chapin, SC 29036
803-932-9000

KWS Motorsports

North Charleston, SC 29418
803-566-0004

SOUTH DAKOTA**Sabers Specialties**

Mitchell, SD 57301
605-996-7433

Speed Performance

Blackhawk, SD 57718
605-695-2272

J & L H-D

Sioux Falls, SD 57107
605-334-2721

Black Hills H-D

Rapid City, SD 57702
605-342-9362

Dakota V-Twin

Spearfish, SD 57783
605-717-0009

TENNESSEE**Thunder X Performance**

Bulls Gap, TN 37711
423-620-1089

HDT CYCLE

Dyersburg, TN 38024
731-285-1798

HDT CYCLE

Dyersburg, TN 38024
731-285-1798

HDT CYCLE

Dyersburg, TN 38024
731-285-1798

Colboch H-D

Morristown, TN 37814
423-586-5343

Performance Psyche

Knoxville, TN 37938
865-925-0914

Dynomasters

Chattanooga, TN 37421
423-331-1252

Honda of Cool Springs

Franklin, TN 37067
615-376-9300

TNT Performance Dyno

Nashville, TN 37214
615-874-1005

Action Cycles

Clarksville, TN 37042
931-648-1151

TEXAS**Twisted Technology**

Haltom City, TX 76137
817-768-8725

Fast by Few Motorcycle Performance

El Paso, TX 79936
915-834-9579

Ironhorse Motorcycles

Cedar Creek, TX 78612
512-442-4442

H & H Motorcycle

Richmond, TX 77469
979-793-2809

Mr Turbo

Houston, TX 77093
281-442-7113

Northwest Honda

Houston, TX 77037
281-447-3476

Honda of Houston

Houston, TX 77041
281-506-1397

Tejas Motorsports

Highlands, TX 77562
281-843-8591

Cycle Werkz

Fort Worth, TX 76116
817-244-9900

Honda Suzuki North

Farmers Branch, TX 75234
972-241-4623

Central Yamaha

Plano, TX 75074
972-423-4089

Sabin Performance

Dallas, TX 75220
214-351-4555

Kays Motorcycle Mania

Nolanville, TX 76559
254-698-6545

The Bike Shop

Groves, TX 77619
512-501-3988

Johnny Cheese Performance

Round Rock, TX 78664
512-767-4273

Piper Performance

North Richland Hills, TX 76180
817-656-7400

Metric Tech C/O Stadium Yamaha

Irving, TX 75062
972-445-0825

Kileen Powersports

Kileen, TX 76543
254-634-2224

American Road Hog Cycles

Cypress, TX 77429
281-970-1200

Mancuso H-D/Buell Central

Houston, TX 77018
713-880-5666

Power & Chrome

Baytown, TX 77521
281-663-0000

Victoria H-D

Victoria, TX 77901
361-575-7881

Cowboy H-D of Austin

Austin, TX 78747
512-448-4294

Central Texas H-D

Round Rock, TX 78664
512-501-3988

The Little Guys Shop

Mansfield, TX 76063
682-518-9579

Phantom Rider Choppers Inc

New Braunfels, TX 78132
830-228-4606

Independence H-D

College Station, TX 77845
979-690-1669

Dales Bike Shop

Groves, TX 77619
409-902-2615

UTAH**Adrenaline Service & Dyno Tune**

Woods Cross, UT 84087
435-513-5425

H-D of Salt Lake City

Salt Lake City, UT 84115
801-487-4647

Salt Lake Motorsports

Salt Lake City, UT 84101
801-478-4000

VIRGINIA**Devil Dawg LLC**

Chantilly, VA 20151
703-378-4115

Diva Customs

Virginia Beach, VA 23451
757-428-3482

V-Twin Solutions

Buena Vista, VA 24416
540-264-0333

Bayside H-D

Portsmouth, VA 23704
757-397-5550

**Bobby Mock's Custom and
Specialty Service**

Fredricksburg, VA 22406
540-752-4771

**Redline Performance
Motorsports**

Yorktown, VA 23692
757-989-5000

Richmond Superbike

Richmond, VA 23231
804-355-0550

Aggressor Custom Cycles

Portsmouth, VA 23701
757-398-2818

Ultimate Cycle

Richmond, VA 23235
804-330-4800

Cycle Solutions

Gordonville, VA 22942
540-832-0840

Custom Performance

Spotsylvania, VA 22553
571-970-8019

Coleman Powersports

Woodbridge, VA 22192
703-497-1500

Twin Jugs Cycle

Fredericksburg, VA 22405
540-657-8481

Speedworx Enterprise LLC

Lorton, VA 22079
703-339-1763

Aggressor Custom Cycles LLC

Portsmouth, VA 23701
757-398-2818

WASHINGTON**Full Throttle Dyno Service**

Tacoma, WA 98409
253-472-7633

More Power Racing

Marysville, WA 98271
877-438-3939

R and R American Cycle Inc

Auburn, WA 98002
253-520-5520

Columbia Motorcycle H-D

Vancouver, WA 98686
360-695-8831

Northwest H-D

Lacey, WA 98516
360-705-8515

Larrys Cycle Barn

Olalla, WA 98359
360-876-9634

Cyclepath Motorcycle & Machine

Kirkland, WA 98034
425-825-7284

Dans Hawg Farm

Cashmere, WA 98815
509-782-4836

Brothers Performance

Bremerton, WA 98312
360-479-6943

Performance Dyno

Bremerton, WA 98312
360-792-1292

Renton Motorcycles

Renton, WA 98057
425-226-4320

Everett Powersports

Everett, WA 98204
425-347-4500

Skagit Powersports

Burlington, WA 98233
360-757-7999

MaxRPM Motorsports

Bremerton, WA 98312
360-373-6758

WISCONSIN**S&S Cycle Inc.**

Viola, WI 54664
N/A

Voodoo Motorsports Corp

Saukville, WI 53080
262-284-2222

FuelMoto

Little Shute, WI 54140
920-423-3309

Open Road H-D

Fond du Lac, WI 54937
920-921-2344

Zandis V-Twin Service

Sussex, WI 53089
262-246-4266

Firehouse Performance

Kenosha, WI 53140
262-656-0773

Hals H-D

New Berlin, WI 53151
262-860-2060

Racine H-D

Racine, WI 53406
262-884-0123

House of H-D

Milwaukee, WI 53220
414-282-2211

Kutter H-D

Janesville, WI 53545
608-757-0880

Reel Brothers H-D

Mauston, WI 53948
608-847-7702

Rice Lake H-D/Buell

Rice Lake, WI 54868
715-234-5400

H-D of Appleton

Appleton, WI 54913
920-750-6910

Mid Cities Motorsports

West Bend, WI 53095
262-338-1118

Action Power Sports

Waukesha, WI 53189
800-640-6729

Suters Speed Shop

Madison, WI 53718
608-221-8865

Stocks H-D Buell

Manitowoc, WI 54220
920-684-0237

Mikes Cycle Shop Inc.

Menasha, WI 54952
920-734-3363

Power Pac Inc.

Marshfield, WI 54449
715-387-1106

WEST VIRGINIA**Hillbilly Cycle Sales**

Princeton, WV 24740
304-425-4321

WYOMING**Deluxe H-D**

Casper, WY 82601
307-265-3211

Legacy Cycle

Casper, WY 82601
307-232-8790